

Mutual Coupling Reduction for UWB Coplanar Vivaldi Array by Truncated and Corrugated Slot

By Nurhayati

Mutual Coupling Reduction for UWB Coplanar Vivaldi Array by Truncated and Corrugated Slot

Nurhayati, *Student Member, IEEE*, Gamantyo Hendrantoro, *Senior Member IEEE*, Takeshi Fukusako, *Senior Member, IEEE*, and Eko Setijadi, *Member, IEEE*

Abstract— This paper reports mutual coupling reduction in UWB (Ultra wideband) Coplanar Vivaldi Array (CVA) by incorporating truncated and corrugated slot at the border between adjacent elements. An examination of coplanar Vivaldi arrays shows that mutual coupling in the E-plane is more significant than in the H-plane. Subsequently, arrays using exponential and rectangular corrugated slot are compared with those without slot structure through simulation of surface current distribution. A novel Exponential Corrugated Truncated (ECT) structure is implemented to improve mutual coupling performance, while maintaining or even improving co-polar field patterns. The results of simulation and measurement indicate that mutual coupling and return loss performance can be improved by controlling the length of corrugated structure and the distance of the slot structure from the center of Vivaldi's tapered slot. CVA achieves bandwidth ratio of 5:1, i.e., from 2-10 GHz. ECT-CVA structure reduces mutual coupling to below -20 dB in a large portion of the whole band, shows 3.9-10.2 dBi gain over the entire band, increases SLL performance at 4-9 GHz compared to CVA without slot structure.

Index Terms— Antenna array, mutual coupling, corrugated antenna, Vivaldi antenna.

I. INTRODUCTION

VIVALDI antenna was first proposed by Gibson [1] for large bandwidth and high directivity. Other advantages include ability in realizing a desired gain, beamwidth and beam scanning, as well as practicability for arrangement into array. The minimum bandwidth requirement of 2:1 for UWB antenna [2] can be fulfilled by Vivaldi, which has been used in such applications as void detection inside concrete [25] wearable communications, and sensing systems [3]-[7]. This paper focuses on Coplanar Vivaldi antenna that gives higher gain and more symmetrical radiation pattern than AVA (Antipodal Vivaldi Antenna) [8].

Manuscript received, 2018; revised, 2018; accepted, 2018. Date of publication, 2018; date of current version, 2018. This work was supported by the Indonesian Ministry of Research, Technology and Higher Education through the [10] and BPPDN programs. Nurhayati, G. Hendrantoro, E. Setijadi are with the Department of Electrical Engineering, Institut Teknologi Sepuluh Nopember, Surabaya, Indonesia. Nurhayati is presently on leave from Universitas Negeri Surabaya, Indonesia. (e-mail: nurhayati15@mhs.ee.its.ac.id, gamantyo@ee.its.ac.id, eloset@ee.its.ac.id). Fukusako is with Department of Computer Science & Communication Engineering, Kumamoto University, Japan. (fukusako@cs.kumamoto-u.ac.jp)

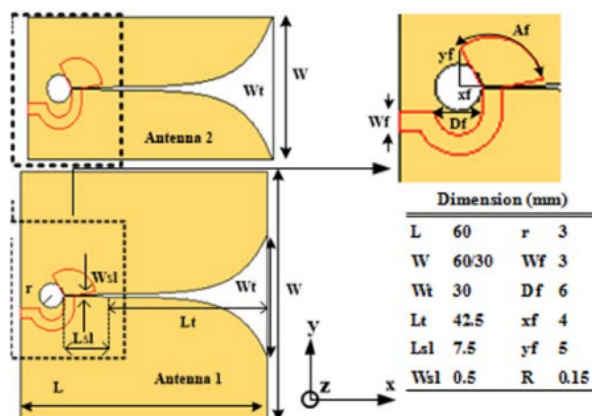


Fig. 1. Dimension of Coplanar Vivaldi Antenna elements

Attempts have been made to realize Vivaldi with larger bandwidth and minimized dimension [9]-[11]. However, smaller antennas reduce efficiency and hardly yield return loss above 10 dB at lowest frequency. While in an array smaller elements can reduce grating lobe at high frequency, smaller elements can increase mutual coupling if the spacing is less than half wavelength of its lowest frequency, which in turn degrades radiation pattern and return loss.

Mutual coupling reduction techniques between non-Vivaldi elements have been reported, such as meander line [12], metamaterial [13] and strip wall [14], which are complex, employing either double layer or wall. Radiation pattern improvement by corrugated structure has been reported in [15], [16] but mutual coupling induced has not been studied. Mutual coupling has been studied for array of AVAs [17], but return loss for each element and mutual coupling (given by S_{ij} , where $i \neq j$) have not been researched thoroughly.

A previous study [18] shows that infinite array of Vivaldi elements benefit from mutual coupling in terms of larger bandwidth. But some applications might only require finite array, for which mutual coupling and return loss at lower band are problematic. Accordingly, our main contribution is the study of mutual coupling and its reduction by applying various types of slot structure at the border between elements in Coplanar Vivaldi Arrays (CVAs) with limited number of elements built as continuous patch. The first part of this paper evaluates mutual coupling in such arrays, which demonstrates that mutual coupling in the E-plane is more significant than that in the H-plane, as presented in Section II.

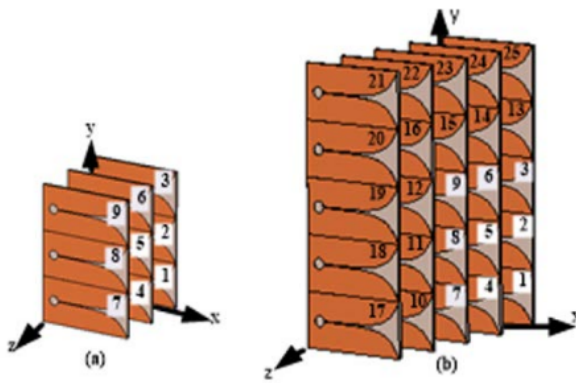


Fig. 2. CVA with dimension (a). 3x3 and (b). 5x5 which is an extension from 3x3.

The latter part of this paper discusses mutual coupling reduction in the E-plane for coplanar Vivaldi array by introducing slot structures at the border between adjacent elements oriented transverse to the direction of surface current, strengthened by corrugation and truncation. We compare arrays with different structures in terms of surface current distribution, return loss, mutual coupling, co-polar and cross-polar field patterns. We also provide equations for length of the slot structure and its distance to the element's tapered slot that determines mutual coupling and return loss. Simulation using CST and measurement show that arrays with exponential corrugated truncated (ECT) slot performs the best in mutual coupling, gain and side lobe level (SLL). This is discussed in Section III, while the overall conclusion is given in Section IV.

II. MUTUAL COUPLING IN COPLANAR VIVALDI ARRAY

Vivaldi elements are designed as in Fig. 11 on FR4 materials with dielectric constant of 4.6, substrate thickness of 1.6 mm, copper thickness of 0.035 mm. [21]: 60 mm × 60 mm element has bandwidth ratio of 5:1, i.e., return loss is better than 10 dB in the 2-10 GHz range, typical of UWB antennas. The tapered slot of Vivaldi can be designed as [17]:

$$y = C_1 e^{Rx} + C_2, \quad C_1 = \frac{y_2 - y_1}{e^{Rx_2} - e^{Rx_1}}, \quad C_2 = \frac{y_1 e^{Rx_2} - y_2 e^{Rx_1}}{e^{Rx_2} - e^{Rx_1}} \quad (1)$$

Where y denotes the tapered slot curve, x_1 , y_1 , x_2 and y_2 the coordinates of the start and end of tapered slot's slope.

CVAs with different dimensions in Fig.2 are analyzed to get scattering parameter performance in fig. 3 and 4 before discussing mutual coupling method. The center-to-center spacing of 30 mm at 2 GHz for an array structure with continuous patch is equivalent to element width of $0.2\lambda_0$, but 60mm is equivalent to element width of $0.4\lambda_0$. Both antennas have different element widths with other parameters fixed. It yields high mutual coupling ($S_{21} > -10\text{dB}$) around the lower end frequency. Fig. 3(a) and (b) show S_{11} and S_{21} performance in dB scale at 2 GHz for element width of 60 mm (0.4λ) and 30 mm (0.2λ), respectively. With finite yet increasing number of elements, the array with 30 mm (0.2λ) element width shows increasing bandwidth as shown by the S_{11} curve in the upper side of Fig. 3(b), but the mutual coupling remains high. Smaller elements with narrower radiator patch and narrower

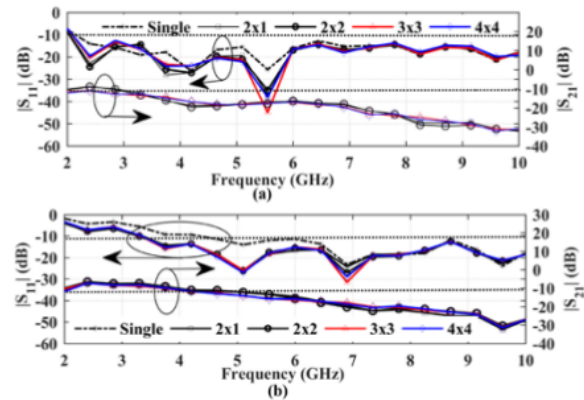


Fig. 3. S_{11} and S_{21} performance of arrays with (a). $0.4\lambda \times 0.4\lambda$ elements and (b). $0.2\lambda \times 0.4\lambda$ elements.

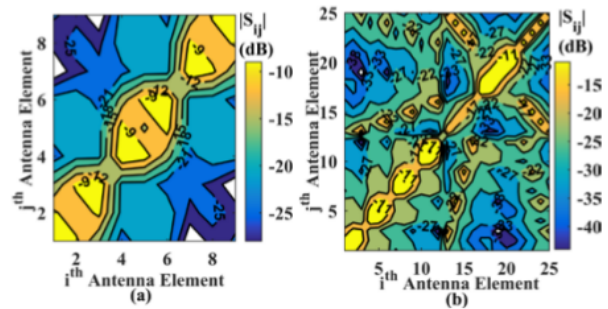


Fig. 4. Contour plot of scattering parameter (S_{ij}) for j^{th} element to i^{th} element for : (a) 3x3 array, and (b) 5x5 array.

mouth opening of tapered slot shifts upward the lower bound of operating frequency range at which S_{11} is below -10 dB. To obtain low return loss, Vivaldi antenna is usually designed with slot $\frac{1}{16}$ th of one wavelength [19]. For smaller element width, if the number of elements in the array is gradually increasing to infinity, the bandwidth increases because of coupling environment. However in Fig.2, those arrays are just simulated with finite number of elements, and therefore, the lowest frequency is still high. In contrast, in Fig. 3(a) for arrays with 60 mm (0.4λ) element width, the bandwidth does not increase significantly with more elements. Smaller spacing between feeding points in the E-plane changes the coupling environment so that anomalies of impedance occur. However, the increasing number of element can increase the bandwidth.

The S parameters at 2.4 GHz of 3×3 arrays in Fig. 4(a) and 5×5 arrays in Fig. 4(b) are shown in contour plots for element width of 0.2λ with numbering of antenna element is the same as port number of antenna given in Fig. 2. They reveal that increasing number of elements enhances performance of return loss as well as mutual coupling parameter. It can be seen for the 3×3 array, S_{33} is -9 dB, while the 5×5 array has S_{33} of -11 dB. For the 3×3 array, S_{98} is -9 dB but for the 5×5 array, S_{98} is -11 dB, where S_{ij} for $i \neq j$ is [20] coupling from j^{th} element to i^{th} element for arrangement shown in Fig. 2. By increasing the number of elements, mutual scattering can be reduced because it is induced by coupling from elements on all sides. In the E-plane, mutual coupling appears to be larger

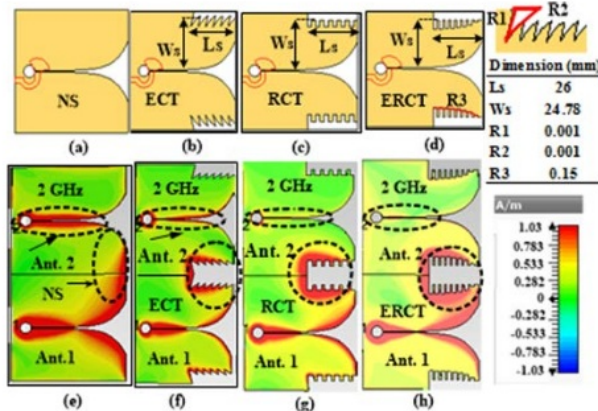


Fig. 5. Geometry of Vivaldi element with slot structures: (a). NS, (b). ECT, (c). RCT, (d). ERCT with their corresponding current distribution in (e)-(h).

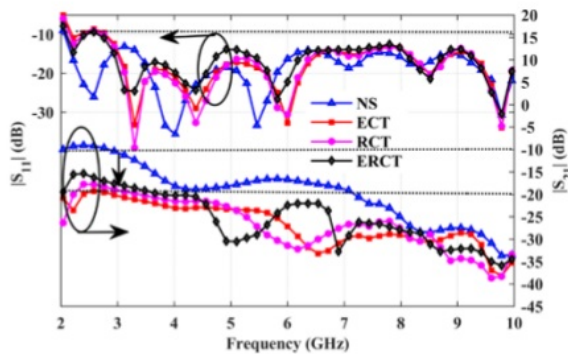


Fig. 6. S-Parameters for arrays with various structures.

13 than it is in the H-plane. For the 5×5 array, in the E-plane, S_{56} is around -11 dB, which is higher than mutual coupling in the H-plane with S_{58} of around -22 dB. In the E-plane, surface current flows in the adjacent element, which causes coupling between elements, whereas in the H-plane, coupling is induced by electric field through the air. The diagonal of contour plot shows $S_{ij} = S_{ji}$. Over all, these observations indicate that mutual coupling is a bigger issue than return loss in coplanar Vivaldi arrays, with greater impact shown in the E-plane than the H-plane.

III. MUTUAL COUPLING REDUCTION

A. Vivaldi antenna and surface current performance

We consider several slot structures, i.e., straight, exponential, corrugated and truncated, or their combinations. Truncated slot has been used in [18] but how it reduces mutual coupling is not explained. Corrugated slots have been used in [15], [16] for different purposes to improve radiation pattern, as well as in our previous work [20]. Aside from no slot structure (NS), there are three types of slot structure evaluated herein for mutual coupling reduction, as shown in Fig. 5, namely, exponential corrugated truncated slot (ECT), rectangular corrugated truncated slot (RCT), and exponential rectangular corrugated truncated slot (ERCT). All structures are simulated with the same amplitude excitation with ideal (lossless) power divider connected to SMA connectors.

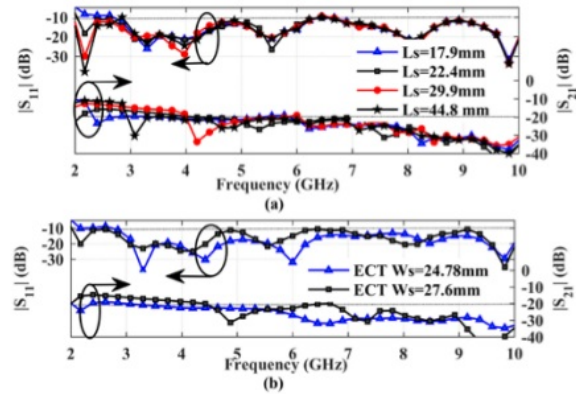


Fig. 7. S-Parameters: (a). varying L_s , and (b) varying W_s

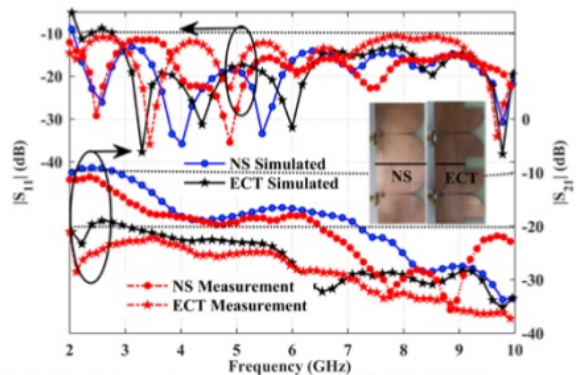


Fig. 8. Simulation and measurement S11 and S21: NS and ECT.

B. Surface Current Performance

12 Fig. 5 shows geometry of Coplanar Vivaldi element and surface current in two element array when the lower antenna (antenna 1) is excited and the upper (antenna 2) is terminated at 2 GHz. Surface currents in NS array in Fig. 5(e) couple to the upper antenna, which is observable from direction of the surface current in the areas encircled. This happens because there is no transverse structure in between the elements that disturbs the flow of the leaking surface current. In contrast, surface current on array with ECT in Fig. 5(f), RCT in Fig. 5(g), ERCT in Fig. 5(h), concentrated along the slot structure at the border, thus reducing the current that flows to the next element. To further enhance the current concentration around the slot structure and minimize the leakage, saw tooth corrugation can be applied to the slot, for which higher corrugated slope gives better result. In the corrugated slot, surface currents propagate to adjacent element along a longer path than in the straight structure and also crash each other, thereby increasing isolation.

C. Scattering Parameter Performance.

Fig. 6 compares S_{11} and S_{21} of Vivaldi arrays with various slot structures. The array structures in the order of superiority in S_{11} performance at 2.2 GHz are ERCT, RCT, ECT and NS. Better isolation is achieved with ECT, RCT, ERCT and NS in the descending order of superiority at around 4 GHz. The best isolation is achieved for ECT. Accordingly, it suggests that

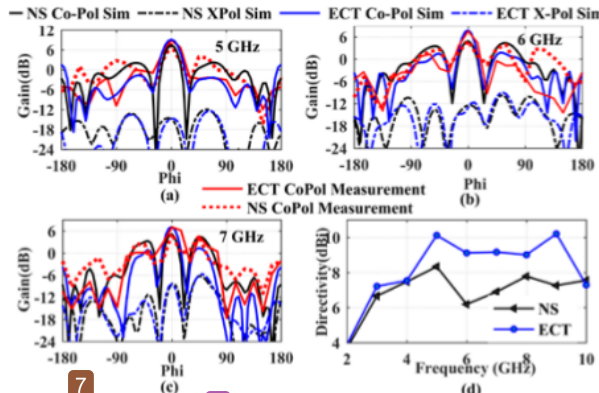


Fig. 9. Simulation and measurement results of co-polar gain and simulation of cross-polar gain in the E plane at : (a) 5 GHz, (b). 6 GHz, (c). 7 GHz and (d). Directivity at 2-10 GHz for ECT and NS.

corrugated structure should be used with truncation for the isolation.

Increasing L_s with a constant $W_s=0.5\lambda_g$ (at 4 GHz) can improve return loss performance but reduce isolation as shown in Fig. 7(a). Longer L_s makes surface current spread along truncated slot over longer path and subsequently make the U turn. Some of the surface current directly flows towards the area in the beginning of tapered slot in the adjacent element and reduces isolation. In contrast, the shorter corrugated truncated slot makes some of surface current spread near opening of tapered slot in the excited element and escalates return loss at lower frequency. After the surface current makes a U turn to the next element, it flows to the center slot with longer trajectory that enhances isolation. S_{11} performance below -10 dB can be reached from 2-10 GHz by setting the length of L_s to $0.5\lambda_g$ with guided wavelength λ_g obtained from any value of f (GHz) where $f_L \leq f \leq (f_c - 2)$ and setting W_s to $0.5\lambda_g$ where $f_L + 1 < f < (f_c - 2)$, with f_L and f_c is the lowest and the center frequency, respectively. This step gives the rule for minimum and maximum dimensions of L_s and W_s as shown in Fig. 5. By considering effective dielectric [16], the value of L_s and W_s should be set:

$$L_s \text{ or } W_s = 0.5\lambda_g = \frac{c}{2f\sqrt{\epsilon_{eff}}} = \frac{\sqrt{2}\lambda}{2\sqrt{\epsilon_r + 1}} \quad (2)$$

S_{11} and S_{21} for [19] with different values of W_s with a constant $L_s=0.5\lambda_g$ (at 3.5 GHz) are shown in Fig. 7(b). Smaller W_s appears to reduce return loss performance but leads to higher isolation in both structure. To comply return loss requirement with smaller W_s , larger L_s can be used. Results of simulation and measurement of S_{11} and S_{21} for array with ECT and NS are presented in Fig. 8. By simulation, at 2.16 GHz the arrays without slot yield S_{21} of -9.34 dB, whereas those with ECT give S_{21} of -24.19 dB. It is found that both simulation and measurement show consistency.

D. Radiation Pattern Performance

Fig. 9 compares simulation and measurement results of co-polar gain and simulation of cross-polar field pattern in the E-plane between ECT-CVA and NS-CVA. The arrays generally

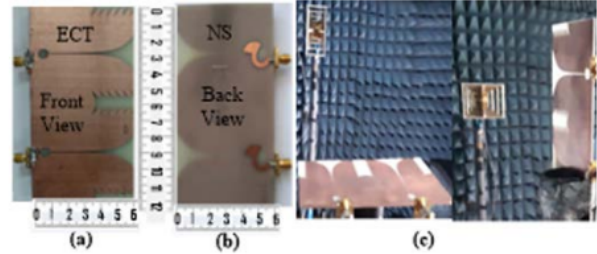


Fig. 10. Fabricated antenna: (a) ECT, (b). NS, and (c). ECT measurement.

TABLE I
COMPARISON OF ECT AND NS ARRAYS

F _{in} GHz	Dir (dBi)		Co-Pol (dB)		X-Pol (dB)		SLL (dB)		S ₂₁ (dB)	
	ECT	NS	ECT	NS	ECT	NS	ECT	NS	ECT	NS
2	3.9	3.7	3.5	3.3	-26	-22	-7.2	-7.2	-20	-9.8
3	7.2	6.7	6.8	6	-17	-15	-7.8	-8.7	-16	-11
4	7.5	7.5	6.8	6.7	-15	-14	-6.3	-5.3	-18	-18
5	10.1	8.3	9.1	7.4	-12	-12	-7.5	-5.3	-29	-18
6	9.1	6.2	7.8	4.8	-9	-9	-6	-1.6	-23	-17
7	9.2	6.9	7.1	5.1	-5.7	-6	-5.8	-2.1	-29	-19
8	9	7.8	6.6	5.8	-4	-4	-3.3	-2.8	-27	-25
9	10.2	7.3	7.1	4.9	-2.5	-3	-6.9	-1.2	-30	-28
10	7.3	6.6	0.7	-0.5	3.8	3	-1.6	-1	-34	-33

preserve the wideband directivity as shown in Fig. 9(d). Radiation pattern and S_{21} performance of arrays with ECT and NS at various frequencies is shown in Table. I. Directivity, co-polar gain and S_{21} of ECT-CVA is better than NS over the whole band of 2-10 GHz, whereas cross-polar gain for ECT is better than NS in the lower end frequency. ECT only improves SLL at 4-9 GHz, while at 10 GHz, array with element width of 60 mm has center-to-center spacing of $2\lambda_0$, which yields grating lobes. Corrugated slot in antenna focuses electric field and enhances surface current over the whole patch, thus improving directivity and radiation pattern. There are trade-off between return loss, isolation, and SLL performance in UWB antenna, which is influenced by the geometry of the antenna, feeding shape, patch design and substrate.

IV. CONCLUSION

We have found that mutual coupling in UWB-CVA is more prevalent in E-plane than in H-plane. A family of mutual coupling reduction methods for coplanar Vivaldi array with various slot structures at the edges of adjacent elements have subsequently been demonstrated. Generally, reduction of mutual coupling is achieved by placing a slot structure transverse to the direction of surface current at the border between elements to reduce surface current flowing to the next. The ECT structure is effective to improve isolation in all band, especially at lower frequency, directivity in the whole band of 2-10 GHz, and SLL in 4-9 GHz. Therefore, it can be applied for UWB CVA antenna application.

REFERENCES

- [1] P. J. Gibson, "The Vivaldi Aerial," in *Proc. 9th European Microwave Conf.*, Brighton, September, 17-20, 1979, pp. 101-105.

- [2] R. L. Haupt, *Antenna Arrays: A Computational Approach*, John Wiley & Sons, Inc Publication, 2010.
- [3] M. Moosazadeh, S. Kharkovsky, and J. T. Case, "Miniaturized UWB Antipodal Vivaldi Antenna and Its Application for Detection of Void Inside Concrete Specimens," *IEEE Antennas Wireless Propag. Lett.*, vol. 16, pp. 1317-1320, 2017.
- [4] Q. H. Abbasi, M. U. Rehman, X. Yang, A. Alomainy, K. Qaraqe, and E. Serpedin, "Ultrawideband Band-Notched Flexible Antenna for Wearable Applications," *IEEE Antennas Wireless Propag. Lett.*, vol. 12, pp. 1606-1609, 2013.
- [5] R. Natarajan, J. V. George, M. Kanagasabai, and A. K. Shrivastav, "A Compact Antipodal Vivaldi Antenna for UWB Applications," *IEEE Antennas Wireless Propag. Lett.*, vol. 14, pp. 1557-1560, 2015.
- [6] S. Chamaani, M. S. Abrishamian, and S. A. Mirtaheri, "Time-Domain Design of UWB Vivaldi Antenna Array Using Multiobjective Particle Swarm Optimization," *IEEE Antennas Wireless Propag. Lett.*, vol. 5, pp. 666-669, 2010.
- [7] J. Wu, Z. Zhao, Z. Nie, and Q-H Liu, "A Printed UWB Vivaldi Antenna Using Stepped Connection Structure Between Slotline and Tapered Patches," *IEEE Antennas Wireless Propag. Lett.*, vol. 13, pp. 698-701, 2014.
- [8] J. Puskeley, J. Lacik, Z. Raida, and H. Arthaber, "High Gain Dielectric-Loaded Vivaldi Antenna for Ka Band Application," *IEEE Antennas Wireless Propag. Lett.*, vol. 15, pp. 2004-2007, 2016.
- [9] D. Yang, S. Liu, and D. Geng, "A Miniaturized Ultra-wideband Vivaldi Antenna with Low Cross Polarization," *IEEE Access*, vol. 5, pp. 23352-23357, 2017.
- [10] G. Teni, N. Zhang, J. Qiu, and P. Zhang, "Research on a Novel Miniaturized Antipodal Vivaldi Antenna With Improved Radiation," *IEEE Antennas Wireless Propag. Lett.*, vol. 12, pp. 417-420, 2013.
- [11] A. Z. Hood, T. Karocolak, and E. Topsakal, "A small Antipodal Vivaldi Antenna for Ultrawide-Band Applications," *IEEE Antennas Wireless Propag. Lett.*, vol. 7, pp. 656-660, 2008.
- [12] A. O. Boryssenko and D. H. Schaubert, "Physical Aspects of Mutual Coupling in Infinite Broadband Tapered Slot (Vivaldi) Arrays," *5th International Conference on Antenna Theory and Techniques*, Kiev, Ukraine, May, 24-27, 2005, pp. 74-79.
- [13] S. Hwangbo, H. Y. Yang, and Y. K. Yoon, "Mutual Coupling Reduction Using Micromachined Complementary Meander-Line Slots for a Patch Array Antenna," *IEEE Antennas Wireless Propag. Lett.*, vol. 16, pp. 1667-1670, 2017.
- [14] R. Hafezifard, M. N. Moghadasi, J. R. Mohassel, and R. A. Sadeghzadeh, "Mutual Coupling Reduction for Two Closely Meander Line Antennas Using Metamaterial Substrate," *IEEE Antenna and Wireless Propag. Lett.*, vol. 15, pp. 40-43, 2016.
- [15] H. Qi, L. Liu, X. Yin, H. Zhao, and W. J. Kulesza, "Mutual Coupling Suppression Between Two Closely Spaced Microstrip Antennas With an Asymmetrical Coplanar Strip Wall," *IEEE Antennas Wireless Propag. Lett.*, vol. 15, pp. 191-194, 2016.
- [16] M. Abbak, M. N. Akinci, M. Cayoren, and I. Akduman, "Experimental Microwave Imaging with a Novel Corrugated Vivaldi Antenna," *IEEE Trans. Antennas Propag.*, vol. 65, pp. 3302-3307, 2017.
- [17] A. Oliveira, M. Perotoni, S. Kofuji, and J. Justo, "A Palm Tree Antipodal Vivaldi Antenna With Exponential Slot Edge for Improved Radiation Pattern," *IEEE Antennas Wireless Propag. Lett.*, vol. 14, pp. 1334 - 1337, 2015.
- [18] C. Zhang, M. Kuhri, M. Mahfouz, and E. Fathy, "Planar Antipodal Vivaldi Antenna Array Configuration for Low Cross-Polarization and Reduced Mutual Coupling Performance," *IEEE Ant Propag. Society Int. Symposium*, pp. 725-728, 2007.
- [19] C. A. Balanis, *Modern Antenna Handbook*, John Wiley & Sons, Inc Publication, 2008.
- [20] Nurhayati, G. Hendranto, E. Setijadi, "Mutual Coupling and Radiation Pattern of Vivaldi Antenna with Slit," *International Conference on Communication and Information Processing*, Tokyo, Japan, November, 24-26, 2017.

Mutual Coupling Reduction for UWB Coplanar Vivaldi Array by Truncated and Corrugated Slot

ORIGINALITY REPORT

19%

SIMILARITY INDEX

PRIMARY SOURCES

- 1** hal.archives-ouvertes.fr Internet 171 words — 5%
- 2** Hamza Nawaz, Xianling Liang, Muhammad Shahzad Sadiq, Junping Geng, Weiren Zhu, Ronghong Jin. "Ruggedized Planar Monopole Antenna with A Null-Filled Shaped Beam", IEEE Antennas and Wireless Propagation Letters, 2018 Crossref 108 words — 3%
- 3** www.abcelectronique.com Internet 63 words — 2%
- 4** livrepository.liverpool.ac.uk Internet 37 words — 1%
- 5** "THE Effect of Air Exposure on SEY and Surface Composition of Laser Treated Copper Applied in Accelerators", IEEE Transactions on Nuclear Science, 2018 Crossref 24 words — 1%
- 6** Nurhayati, Gamantyo Hendrantoro, Eko Setijadi. "Mutual coupling and radiation pattern of vivaldi antenna with slit", Proceedings of the 3rd International Conference on Communication and Information Processing - ICCIP '17, 2017 Crossref 22 words — 1%
- 7** Mahdi Moosazadeh. "Sidelobe level reduction using Teflon for a microwave and millimetre-wave antipodal Vivaldi antenna", IET Microwaves, Antennas & Propagation, 2020 Crossref 16 words — < 1%

8	sinta3.ristekdikti.go.id Internet	14 words — < 1%
9	www.jpier.org Internet	13 words — < 1%
10	Umairah Umairah, Gamantyo Hendrantoro, Achmad Mauludiyanto, Takeshi Fukusako. "Capacity of 2×2 MIMO HF NVIS Channels With Linearly Polarized Horizontal Antennas", IEEE Wireless Communications Letters, 2019 Crossref	13 words — < 1%
11	pericles.pericles-prod.literatumonline.com Internet	12 words — < 1%
12	I.T.E. Elfergani, J. Rodriguez, R.A. Abd-Alhameed, I. Otung. "Dual-Band MIMO Balanced Antenna for C-Band and WLAN Applications", Loughborough Antennas & Propagation Conference 2018 (LAPC 2018), 2018 Crossref	10 words — < 1%
13	Ramesh, S., and T. Rama Rao. "High gain dielectric loaded exponentially tapered slot antenna array based on substrate integrated waveguide for V-band wireless communications", AEU - International Journal of Electronics and Communications, 2015. Crossref	10 words — < 1%
14	C. Deng. "Design of Resistive Loading Vivaldi Antenna", IEEE Antennas and Wireless Propagation Letters, 2009 Crossref	10 words — < 1%
15	Soumen Pandit, Akhilesh Mohan, Priyadip Ray. "A compact planar MIMO monopole antenna with reduced mutual coupling for WLAN applications using ELC resonator", 2016 Asia-Pacific Microwave Conference (APMC), 2016 Crossref	9 words — < 1%

-
- 16 www.radioeng.cz Internet 9 words — < 1%
-
- 17 www.tandfonline.com Internet 8 words — < 1%
-
- 18 Shuangshuang Zhu, Haiwen Liu, Pin Wen, Lixia Du, Jiafeng Zhou. "A Miniaturized and High Gain Double-Slot Vivaldi Antenna Using Wideband Index-Near-Zero Metasurface", IEEE Access, 2018
Crossref 8 words — < 1%
-
- 19 Mahdi Moosazadeh. "Antipodal Vivaldi Antennas for Microwave Imaging of Construction Materials and Structures", Springer Science and Business Media LLC, 2019
Crossref 8 words — < 1%
-
- 20 Seongjung Kim, Sangwook Nam. "A Compact and Wideband Linear Array Antenna With Low Mutual Coupling", IEEE Transactions on Antennas and Propagation, 2019
Crossref 8 words — < 1%
-
- 21 pt.scribd.com Internet 8 words — < 1%
-
- 22 Prerna Saxena, Ashwin Kothari. "Mathematical Modeling of n-Sided Polygon Metamaterial Split Ring Resonators for 5.8 GHz ISM Band Applications", Wireless Personal Communications, 2017
Crossref 8 words — < 1%
-
- 23 Hasanudin, N. Kuroda, T. Sugimoto. " Pressure Dependence of Electron Distribution along the TCNQ Columns in (TEDA) TCNQ ", Molecular Crystals and Liquid Crystals, 2005
Crossref 8 words — < 1%
-
- 24 Shuangshuang Zhu, Haiwen Liu, Pin Wen, Zhijiao Chen. "A Compact Gain-Enhanced Vivaldi Antenna Array with Suppressed Mutual Coupling for 5G mmWave Application", IEEE Antennas and Wireless Propagation Letters, 8 words — < 1%

25 Nurhayati, Eko Setijadi, Gamantyo Hendrantoro. "Comparison study of S-Band Vivaldi-based antennas", 2016 IEEE Region 10 Symposium (TENSYMP), 2016
Crossref

7 words — < 1%

EXCLUDE QUOTES ON
EXCLUDE
BIBLIOGRAPHY ON

EXCLUDE MATCHES OFF